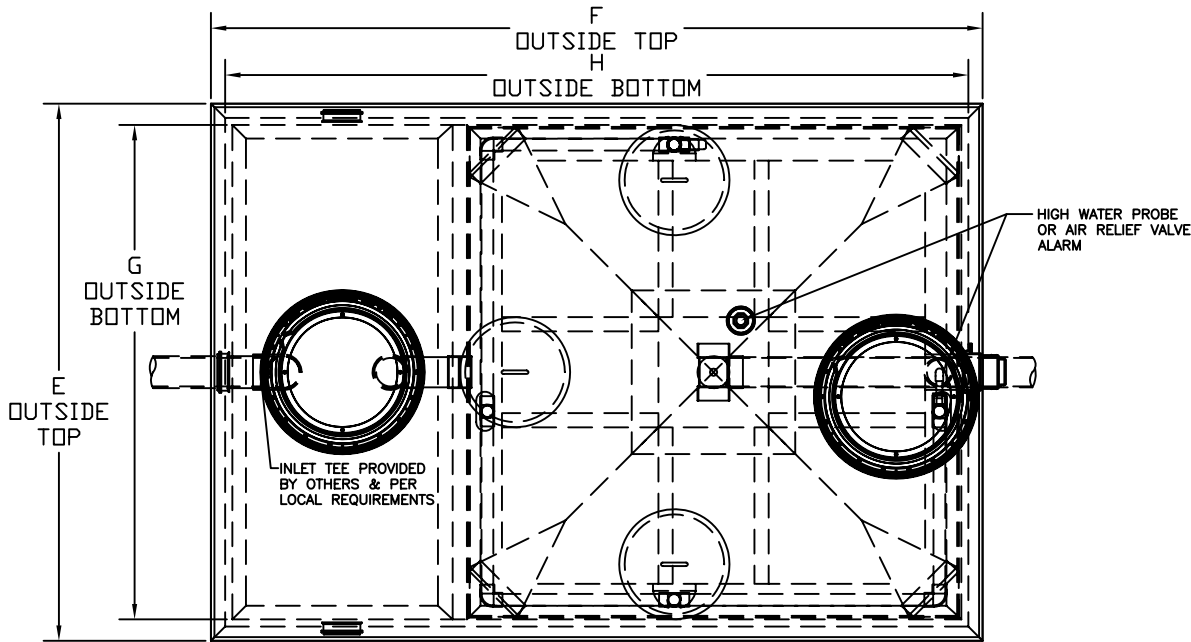


REVISIONS	DESCRIPTION	DATE

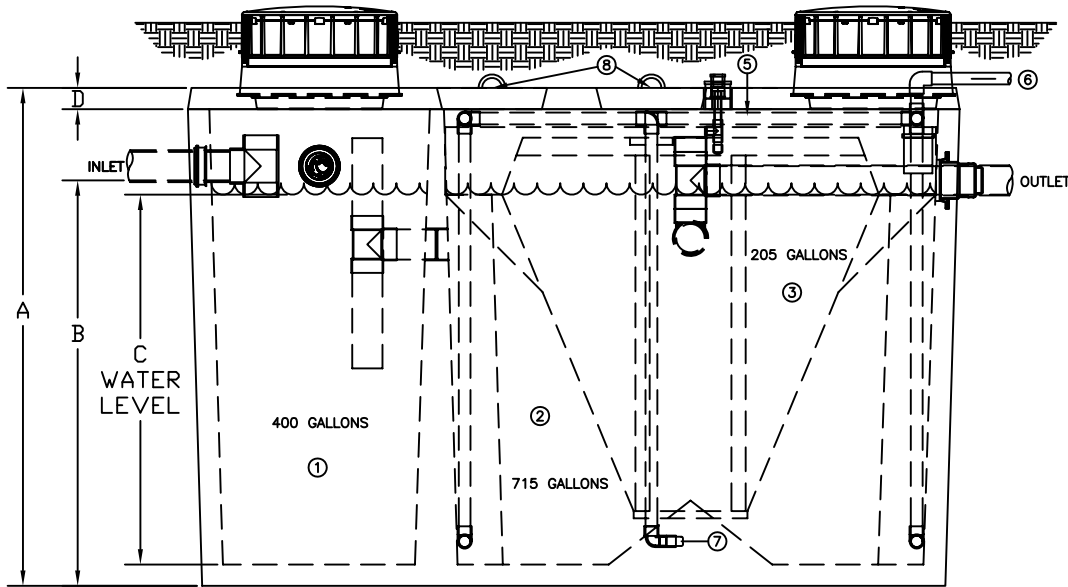
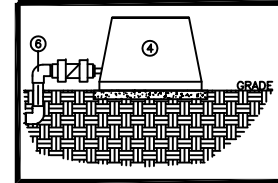
CRITICAL DIMENSIONS

A	69.00"
B	57.00"
C	52.00"
D	3.00"
E	74.50"
F	106.00"
G	65.50"
H	97.00"



PLAN VIEW

TROY AIR BLOWER



SIDE ELEVATION

THE H-SERIES HOOT AEROBIC TREATMENT SYSTEM

- 1) PRETREATMENT TANK- WHERE ANAEROBIC DIGESTION OCCURS AND STORAGE FOR NON-BIODEGRADABLE MATERIALS.
- 2) AERATION CHAMBER- WHERE AIR IS INTRODUCED INTO SEWAGE FOR DIGESTION.
- 3) CLARIFIER- A STILL CHAMBER WHERE SOLIDS SETTLE AND THE CLEAR EFFLUENT RISES.
- 4) TROY AIR LINEAR AIR BLOWER- LONG LIFE, EFFICIENT LINEAR BLOWER WHICH COMPRESSED ATMOSPHERIC AIR AND UNDER PRESSURE DELIVERS IT TO THE TANK. MAY BE REMOTELY MOUNTED UP TO 50' FROM SYSTEM. MUST MAINTAIN 1/8" SLOPE TOWARDS TANK FOR DRAINAGE.
- 5) AIR MANIFOLD- DELIVERS THE AIR FROM THE LINE TO THE STONES FOR DIFFUSION INTO THE SEWAGE.
- 6) AERATION LINE- DELIVERS THE AIR FROM THE PUMP TO THE MANIFOLD. CHECK VALVE INCLUDED.
- 7) AERATION STONE- AIR IS FINELY DIFFUSED FROM THE STONE INTO THE AERATION CHAMBER.
- 8) 15" COVERS- PROVIDE ASSEMBLY PORT ACCESS INSIDE OF THE SYSTEM. (NOT REQUIRED FOR REGULAR SERVICE)



HOOT SYSTEMS, LLC
www.hootsystems.com

Install A Hoot Don't Pollute

THIS DRAWING IS THE PROPRIETARY PROPERTY OF HOOT SYSTEMS LLC. REPRODUCTION, DISCLOSURE OR USE OF ANY PART OF THIS DRAWING OR ANY INFORMATION THEREIN IS EXPRESSLY PROHIBITED WITHOUT PRIOR WRITTEN CONSENT OF HOOT SYSTEMS LLC.

DESCRIPTION: 600 GPD GRAVITY DISCHARGE SYSTEM
H-500 A (2- RISER POLYLOK ACCESS)

PART #

H-600A (2R)

DATE:	DRAWN BY:	CHECK BY:	SCALE:
9-7-09	AY	RS	N.T.S.